

4132 DeTonty



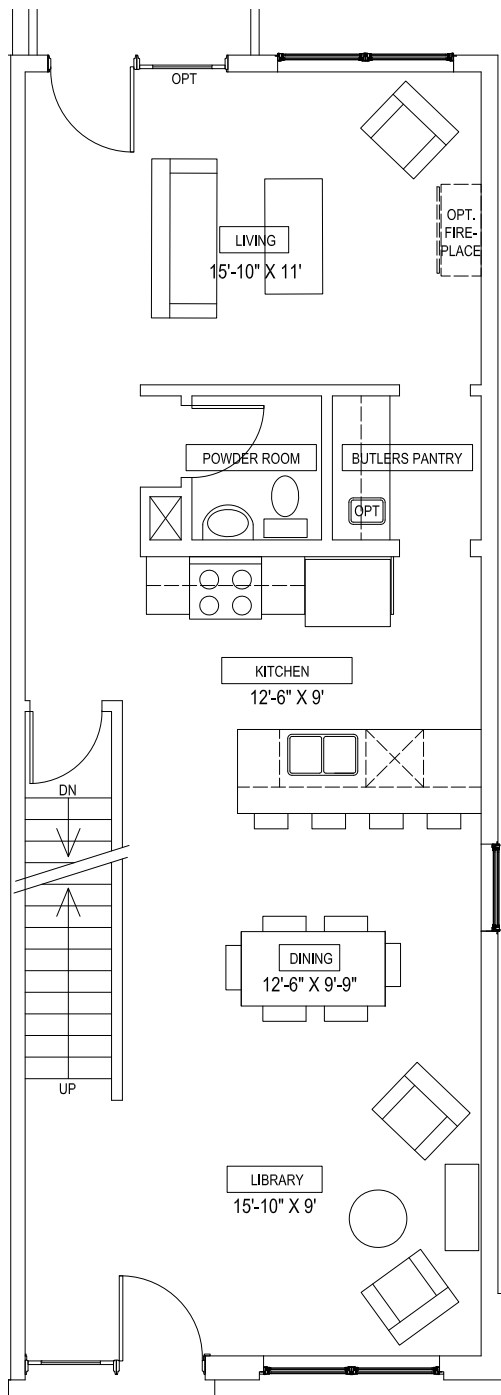
Modern Living Made Easy
uichomes.com

**New Construction Town Home For Sale
in the Historic Shaw Neighborhood**

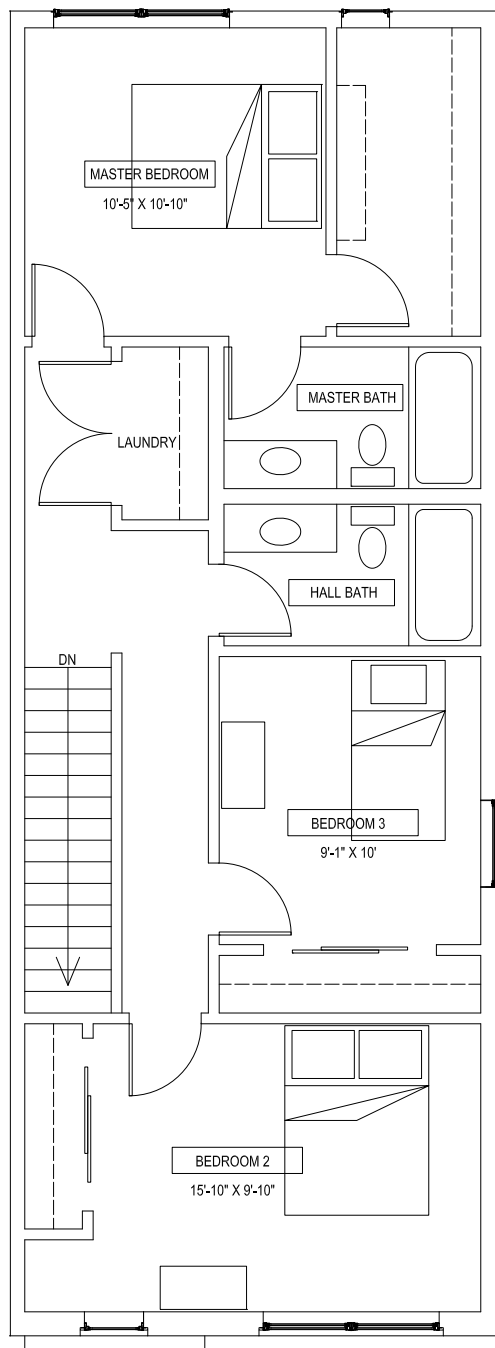
3 bedrooms | 2.5 baths | 1,565sf | \$284,587

4132





1st Floor



2nd Floor

GREAT AMENITIES –

- Caesarstone countertops
- 2-car parking pad
- Soho designer cabinetry
- Stainless steel appliance package
- Hardwood floors throughout 1st floor
- Bathroom rough-in in basement
- Upgraded designer carpet on stairs and second floor

FANTASTIC LOCATION –

- Historic Shaw neighborhood
- Convenient access to I-44
- Walking distance to Missouri Botanical Garden and Tower Grove Park
- Around the corner from Sasha's Wine Bar
- Bailey's Range burger bar and Good Fortune Chinese restaurant coming soon
- Walking distance to Botanical Heights shops and restaurants – Olio+Elaiia, Union Loafers, Chouquette, Union Studio, Nixta
- Convenient to The Grove, Coretex, South Grand, and the Central West End
- Great schools nearby – St Margaret of Scotland, Citygarden Montessori, Mulanphy, Tower Grove Christian.



ELAIA

OLIO

OLIO + ELAIA, UNION LOAFERS, CHOUQUETTE, UNION STUDIO

SLU MED

Kingshighway Blvd

Vandeventer Ave

MOBOT

4132 DeTonty

SASHA'S ON SHAW, BAILEY'S RANGE, SHAW MARKET

S Grand Blvd

I-44

TOWER GROVE PARK

