

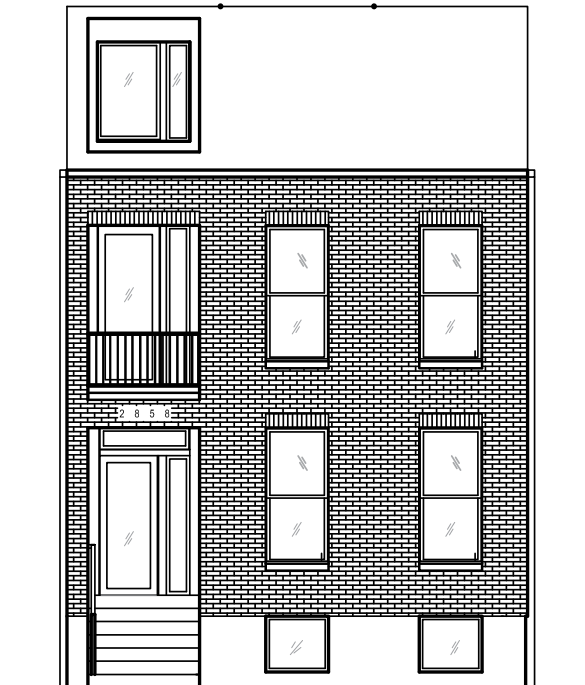
2865-67 Indiana



2853 Indiana

contemporary, open concept homes,  
in Historic Benton Park

- new construction
- 3 bedrooms
- 2.5 baths
- + -2000SF
- carport included
- great finishes
- tons of natural daylight
- luxury primary bath and walk-in closet
- large kitchen and pantry
- beautiful historic neighborhood
- 3 minutes from downtown



2865-67 INDIANA AVE

2853 INDIANA AVE

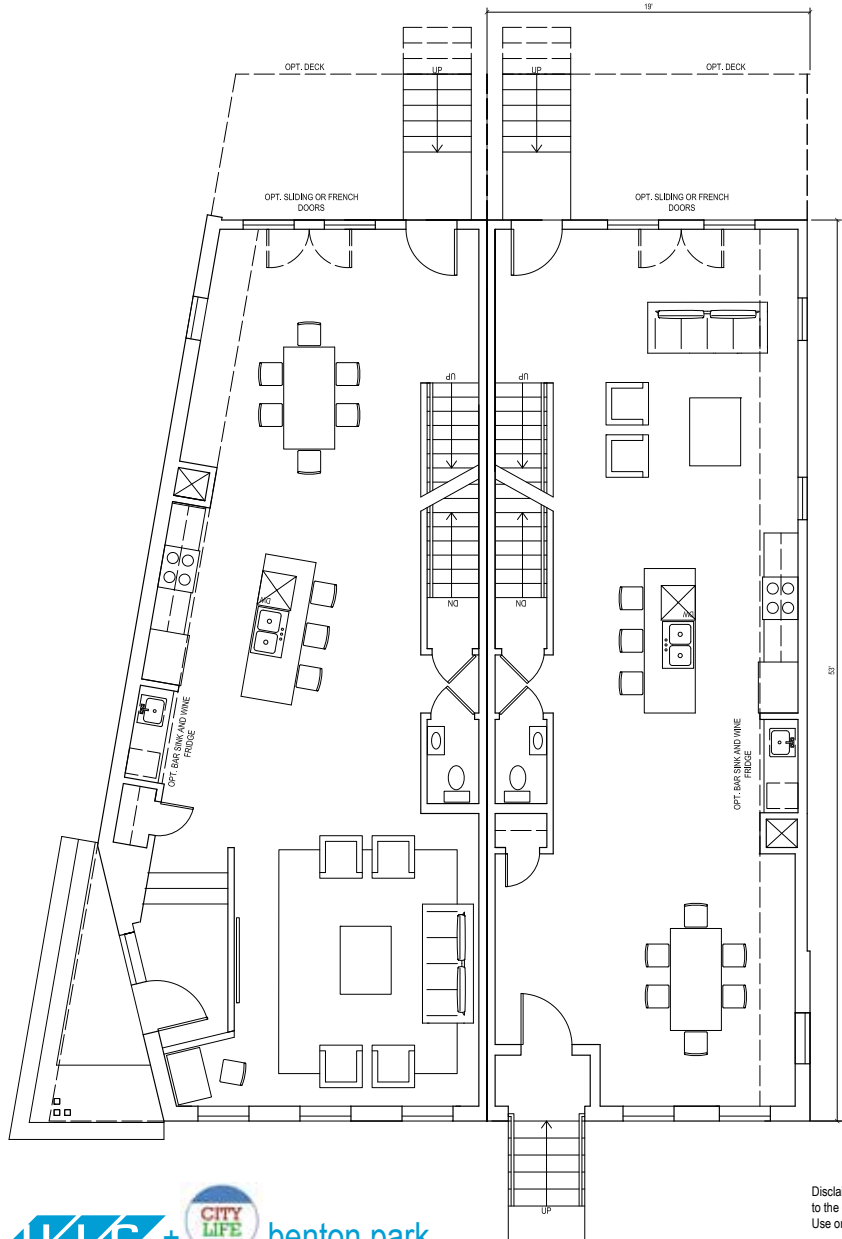
ALLEY

PESTALOZZI ST

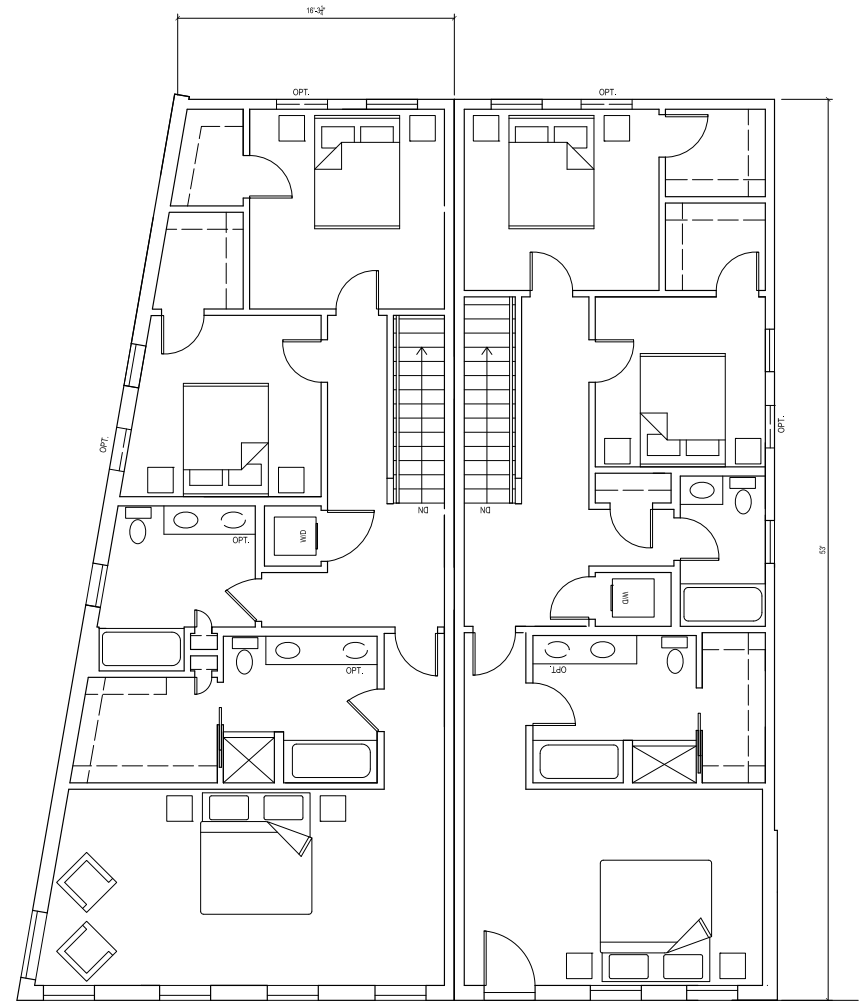


# 2865-67 INDIANA AVE townhomes

## FIRST FLOOR



## SECOND FLOOR



Disclaimer: Drawings may include optional items. These dimensions are approximate and may change slightly as the details of the drawings develop further into a construction documents set and as the house is constructed. due to the evolutionary changes in our design improvements process, there may be variations in room dimensions, door swings, windows, and door locations. These drawings are the sole and absolute property of UIC Homes, LLC. Use or copying of these plans, without the express written consent of UIC Homes, LLC, is illegal. 01/01/2022



SOUTH ELEVATION



EAST ELEVATION



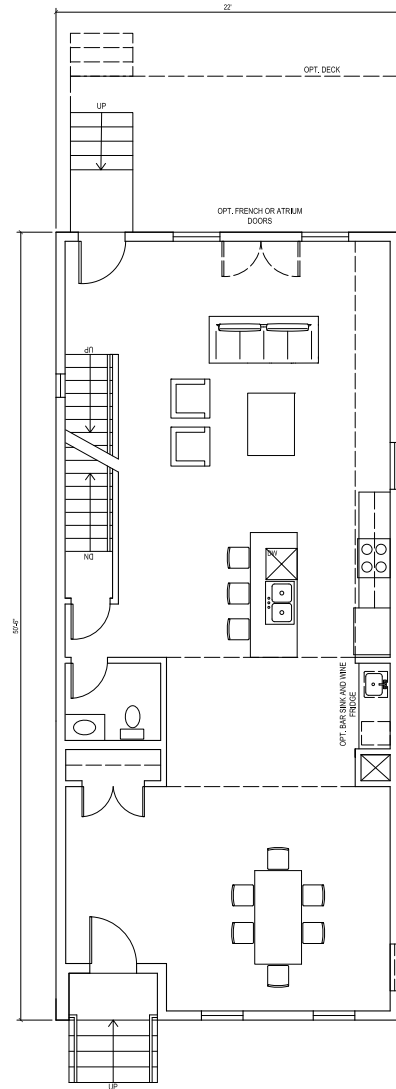
NORTH ELEVATION



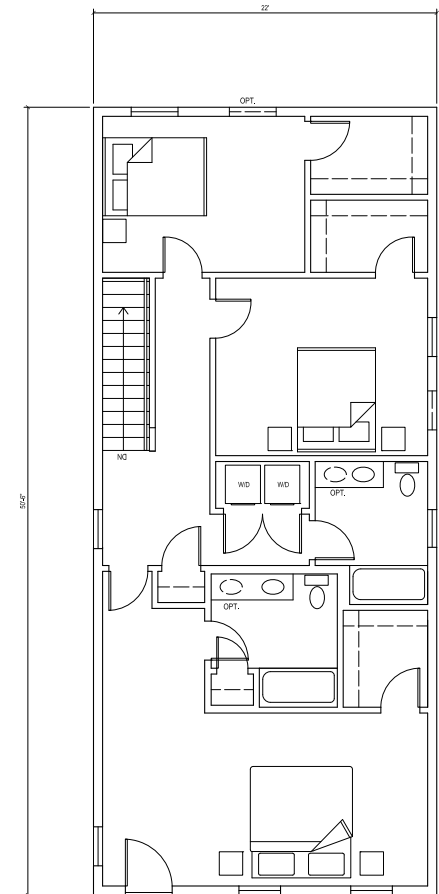
WEST ELEVATION

# 2853 INDIANA AVE

## FIRST FLOOR



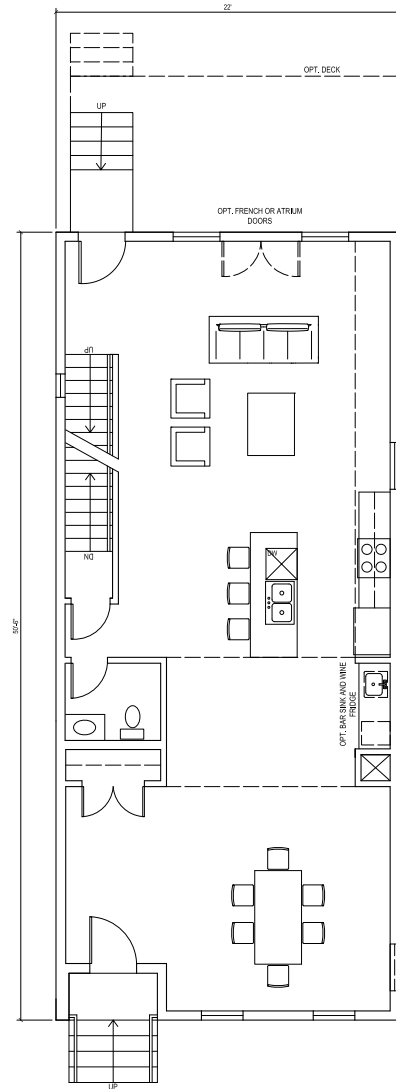
## SECOND FLOOR



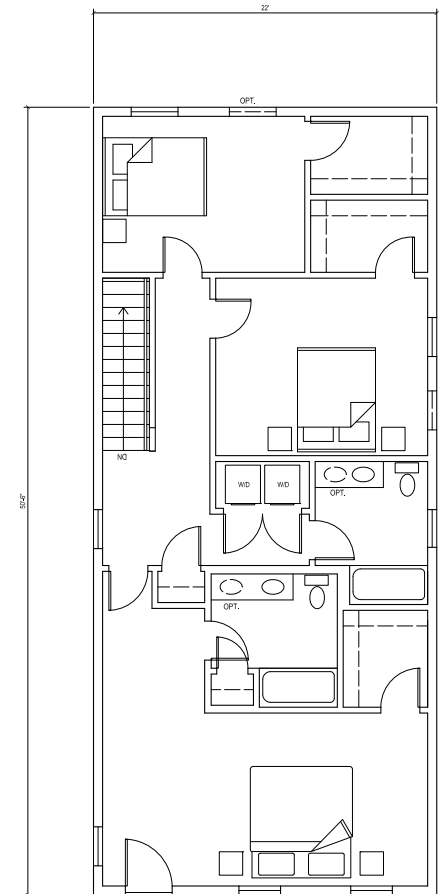
Disclaimer: Drawings may include optional items. These dimensions are approximate and may change slightly as the details of the drawings develop further into a construction documents set and as the house is constructed. due to the evolutionary changes in our design improvements process, there may be variations in room dimensions, door swings, windows, and door locations. These drawings are the sole and absolute property of UIC Homes, LLC. Use or copying of these plans, without the express written consent of UIC Homes, LLC, is illegal. 01/01/2022

# 2853 INDIANA AVE

## FIRST FLOOR

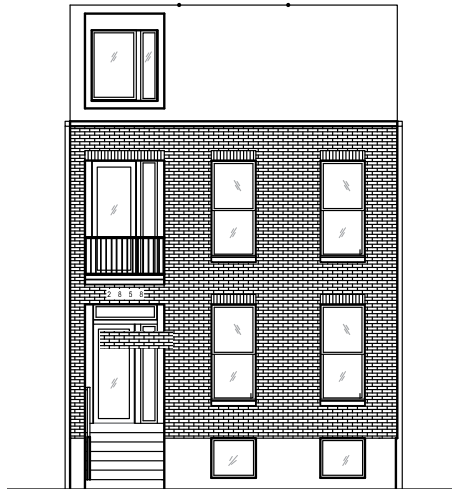


## SECOND FLOOR



Disclaimer: Drawings may include optional items. These dimensions are approximate and may change slightly as the details of the drawings develop further into a construction documents set and as the house is constructed. due to the evolutionary changes in our design improvements process, there may be variations in room dimensions, door swings, windows, and door locations. These drawings are the sole and absolute property of UIC Homes, LLC. Use or copying of these plans, without the express written consent of UIC Homes, LLC, is illegal. 01/01/2022

# 2853 INDIANA AVE



EAST ELEVATION



NORTH ELEVATION



WEST ELEVATION



SOUTH ELEVATION

# photos of similar model



Disclaimer: Drawings may include optional items. These dimensions are approximate and may change slightly as the details of the drawings develop further into a construction documents set and as the house is constructed. due to the evolutionary changes in our design improvements process, there may be variations in room dimensions, door swings, windows, and door locations. These drawings are the sole and absolute property of UIC Homes, LLC. Use or copying of these plans, without the express written consent of UIC Homes, LLC, is illegal. 01/01/2022