

carolina

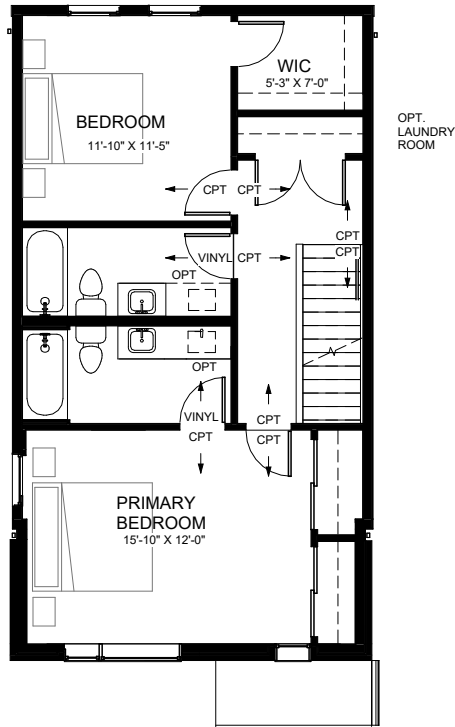
UIC Homes

sustainable, contemporary homes built for modern life

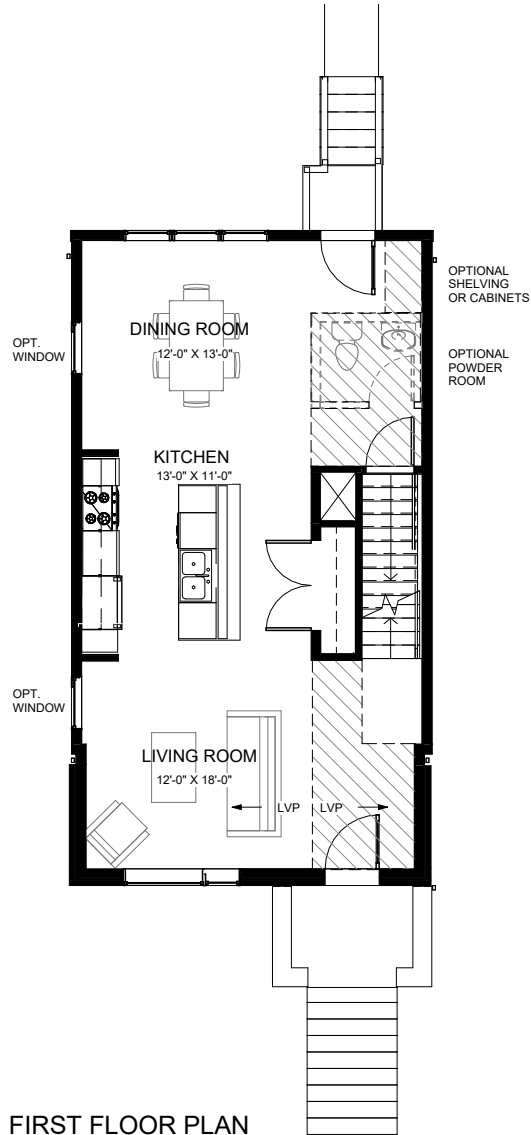
- new construction
- 3 bedrooms
- 2 baths
- 1900 square feet

The Gate District

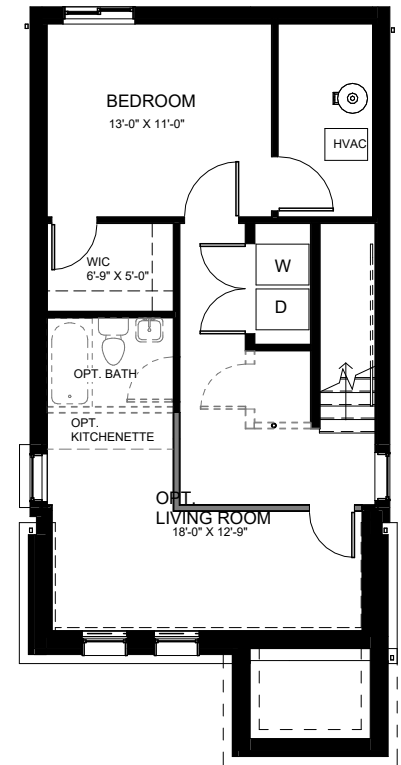




SECOND FLOOR PLAN
720sf

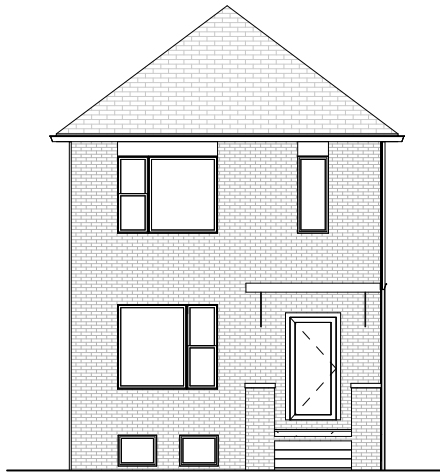


FIRST FLOOR PLAN
720sf

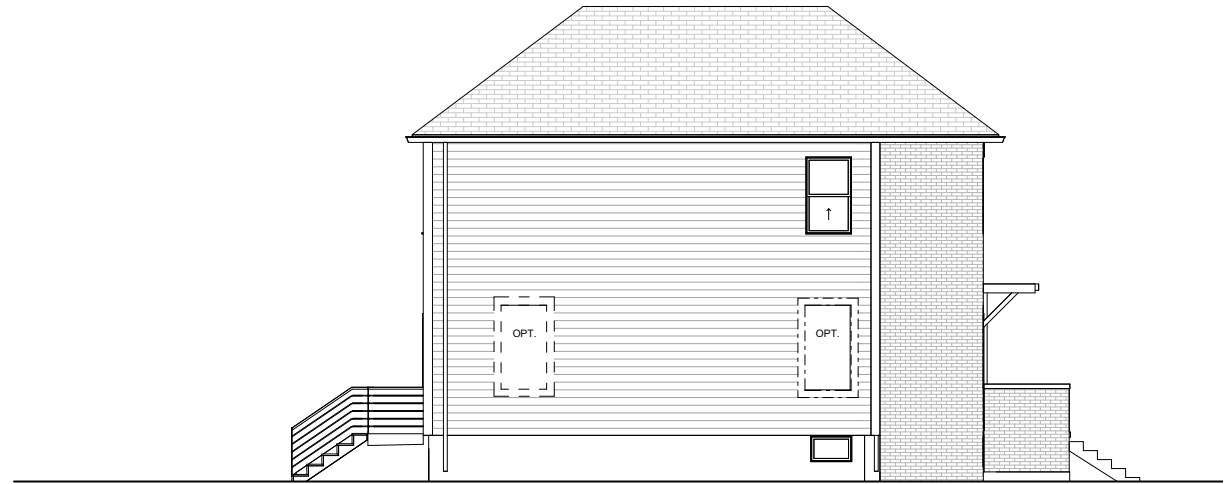


BASEMENT PLAN
720sf (460 finished sf)

Disclaimer: Drawings may include optional items. These dimensions are approximate and may change slightly as the details of the drawings develop further into a construction documents set and as the house is constructed. due to the evolutionary changes in our design improvements process. there may be variations in room dimensions, door swings, windows, and door locations. These drawings are the sole and absolute property of UIC Homes, LLC. Use or copying of these plans, without the express written consent of UIC Homes, LLC, is illegal. 01/01/2020



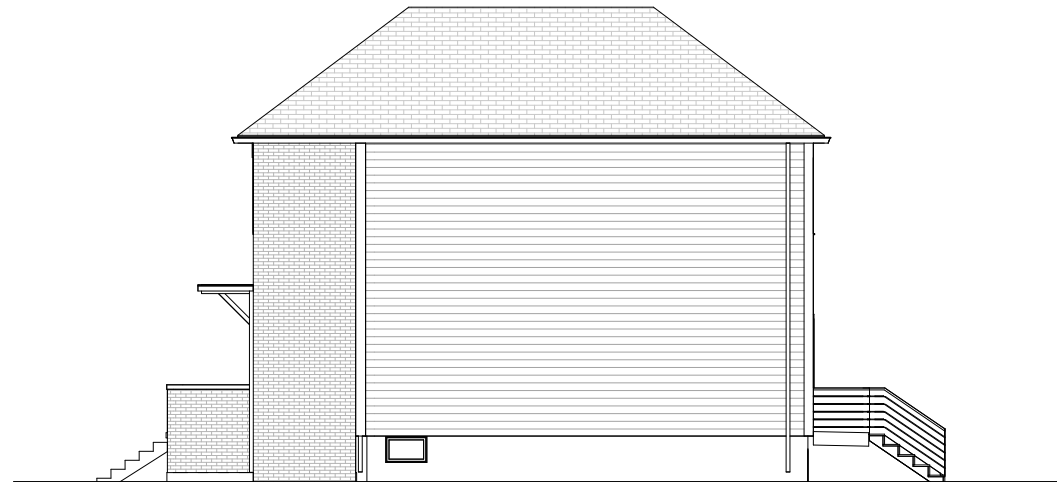
FRONT ELEVATION



LEFT ELEVATION



REAR ELEVATION



RIGHT ELEVATION

Disclaimer: Drawings may include optional items. These dimensions are approximate and may change slightly as the details of the drawings develop further into a construction documents set and as the house is constructed. due to the evolutionary changes in our design improvements process. there may be variations in room dimensions, door swings, windows, and door locations. These drawings are the sole and absolute property of UIC Homes, LLC. Use or copying of these plans, without the express written consent of UIC Homes, LLC, is illegal. 01/01/2020