

vista

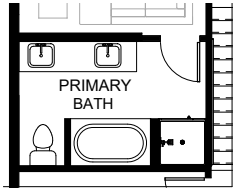
UIC Homes

sustainable, contemporary homes built for modern life

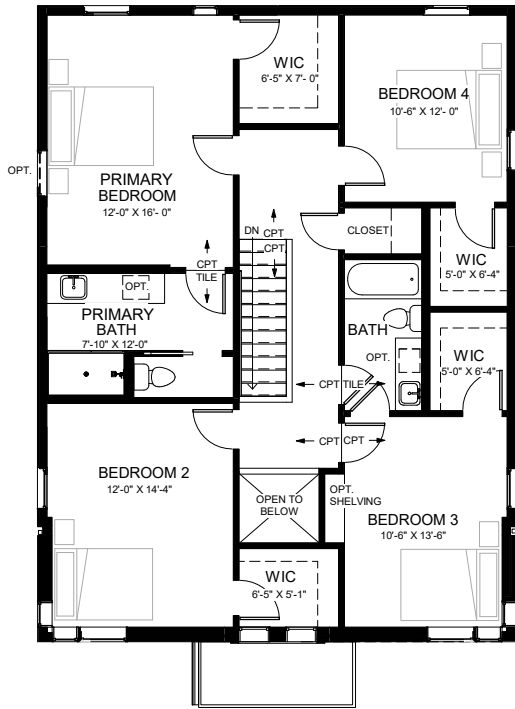
- new construction
- 4 to 5 bedrooms
- 2.5 baths
- 2327 square feet

The Gate District

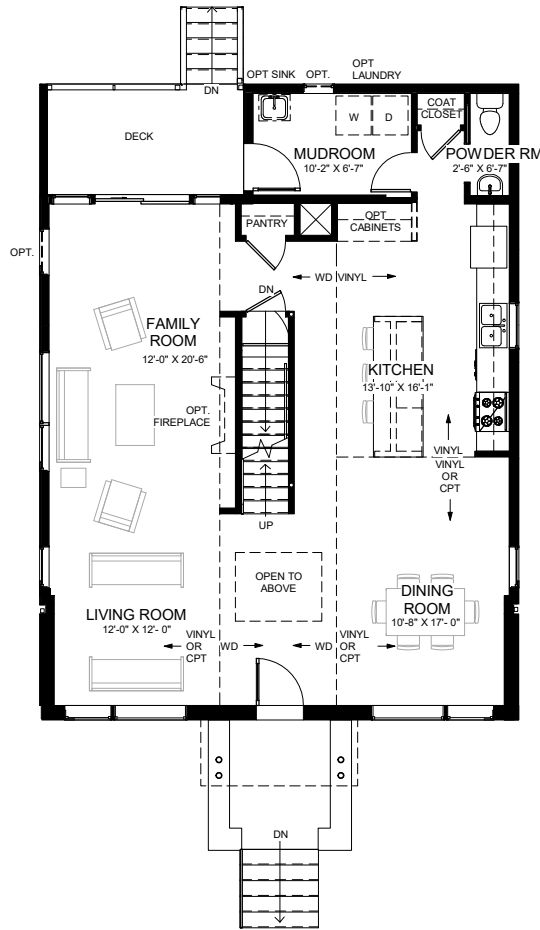




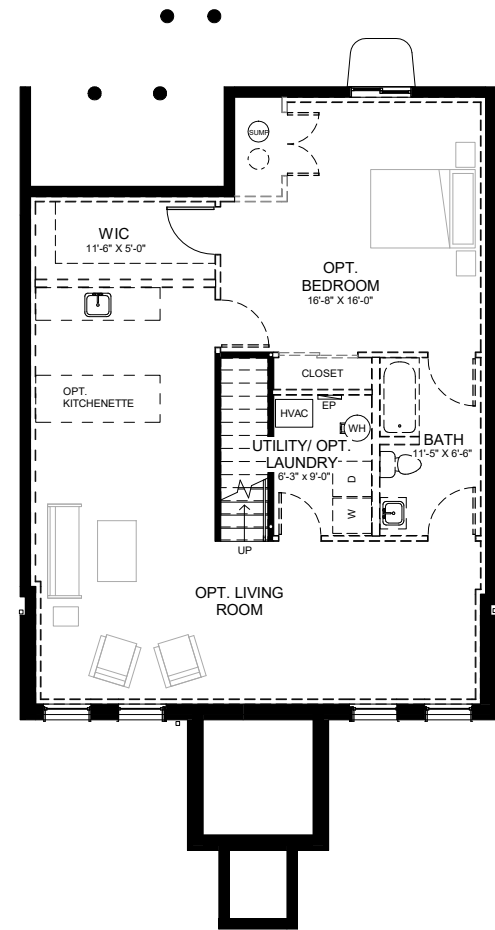
OPTIONAL FIVE FIXTURE - PRIMARY BATH



SECOND FLOOR PLAN
1,172 SF

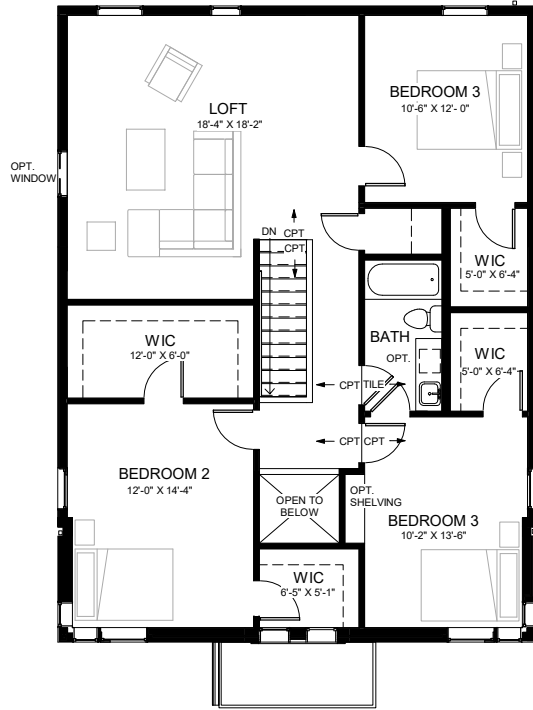


FIRST FLOOR PLAN
1,155 SF

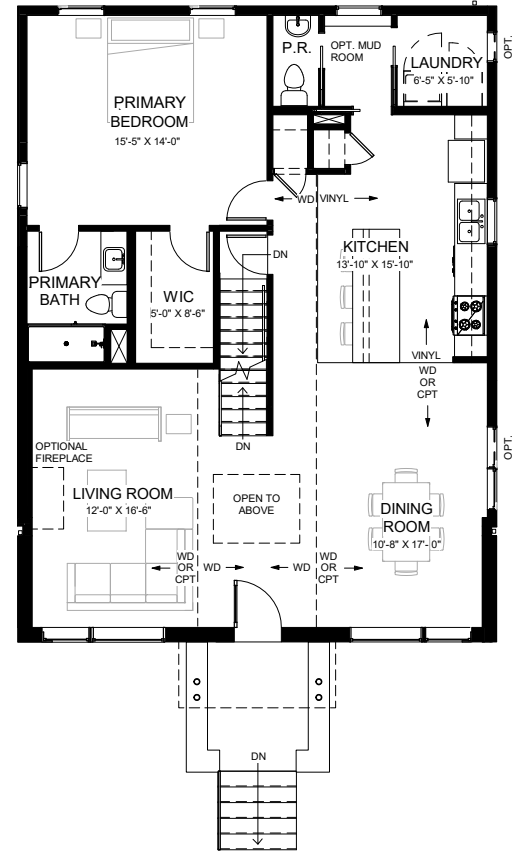


BASEMENT

Disclaimer: Drawings may include optional items. These dimensions are approximate and may change slightly as the details of the drawings develop further into a construction documents set and as the house is constructed. Due to the evolutionary changes in our design improvements process, there may be variations in room dimensions, door swings, windows, and door locations. These drawings are the sole and absolute property of UIC Homes, LLC. Use or copying of these plans, without the express written consent of UIC Homes, LLC, is illegal. 01/01/2020

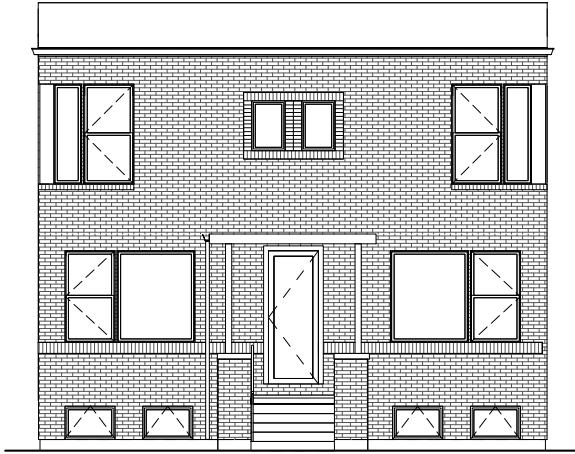


SECOND FLOOR PLAN - OPTIONAL FIRST FLOOR PRIMARY



FIRST FLOOR - OPTIONAL FIRST FLOOR PRIMARY

Disclaimer: Drawings may include optional items. These dimensions are approximate and may change slightly as the details of the drawings develop further into a construction documents set and as the house is constructed. Due to the evolutionary changes in our design improvements process, there may be variations in room dimensions, door swings, windows, and door locations. These drawings are the sole and absolute property of UIC Homes, LLC. Use or copying of these plans, without the express written consent of UIC Homes, LLC, is illegal. 01/01/2020



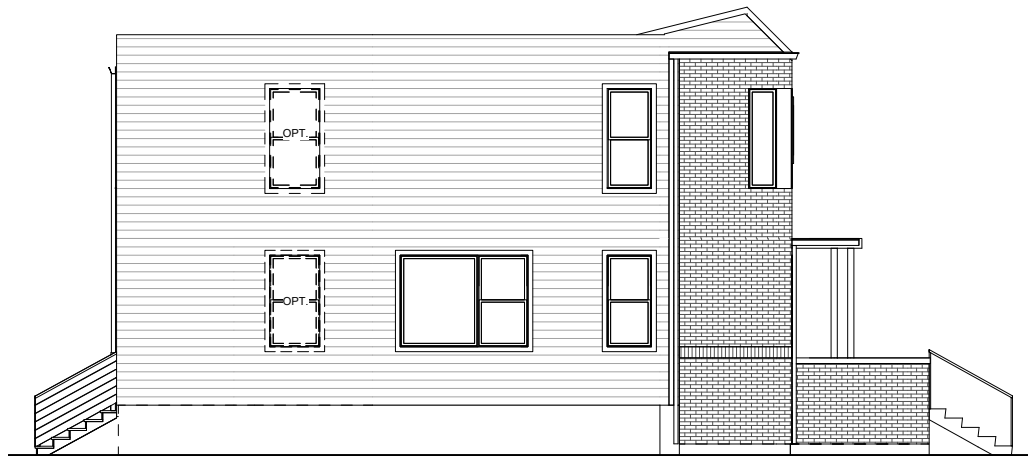
FRONT ELEVATION



LEFT ELEVATION



REAR ELEVATION



RIGHT ELEVATION

Disclaimer: Drawings may include optional items. These dimensions are approximate and may change slightly as the details of the drawings develop further into a construction documents set and as the house is constructed. Due to the evolutionary changes in our design improvements process, there may be variations in room dimensions, door swings, windows, and door locations. These drawings are the sole and absolute property of UIC Homes, LLC. Use or copying of these plans, without the express written consent of UIC Homes, LLC, is illegal. 01/01/2020